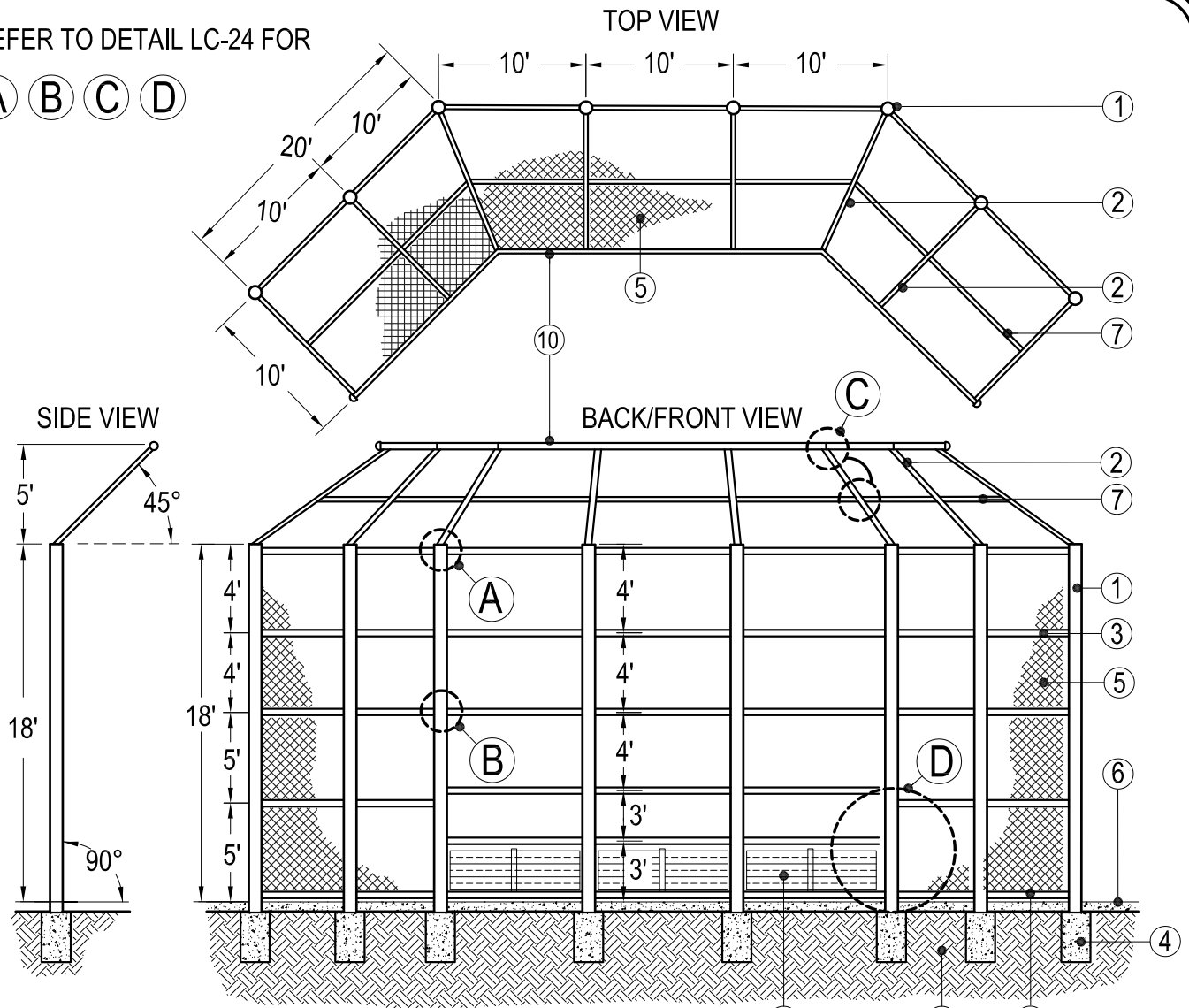


REFER TO DETAIL LC-24 FOR

(A) (B) (C) (D)



- ① 6" DIA. X 18' HIGH GALV. STEEL MAIN POST PER DETAIL LC-06
- ② 3-5/8" DIA. GALV. STEEL POST @ 45° FOR OVERHANG (SECURE TO VERT. POST PER DETAIL LC-24)
- ③ 2-3/8" DIA. GALV. STEEL HORZ. RAIL (SECURE TO VERT. POST PER LC-24)
- ④ 18" DIA. X 60" DEEP CONC. MIN. SIZE FOOTING PER LC-06 & PROJECT STRUCTURAL CALCULATIONS
- ⑤ 9 GAUGE CHAINLINK MESH (2" MIN.)
- ⑥ 12" WIDE CONCRETE CURB PER DETAIL LC-06
- ⑦ 2-3/8" X 10' HIGH HORZ. OVER HANG (SUPPORT PER DETAIL LC-24)
- ⑧ UNDISTURBED SUBGRADE
- ⑨ RECYCLED PLASTIC 2" X 6" BUMPER BOARDS 3' TALL (SECURE PER DETAIL LC-24)
- ⑩ 3-5/8" DIA GALV. STEEL HORZ. END RAIL (SECURE TO 45° POST PER DETAIL LC-24)

REFER TO DETAIL LC-24 FOR LEGEND CONTINUATION

LD Consulting 2012 (Any deviation or reproduction of this design must be approved in writing by Valley-Wide Recreation & Park District)



VALLEY-WIDE RECREATION & PARK DISTRICT

CHAIN LINK BACKSTOP

LC-23

REV. 2012