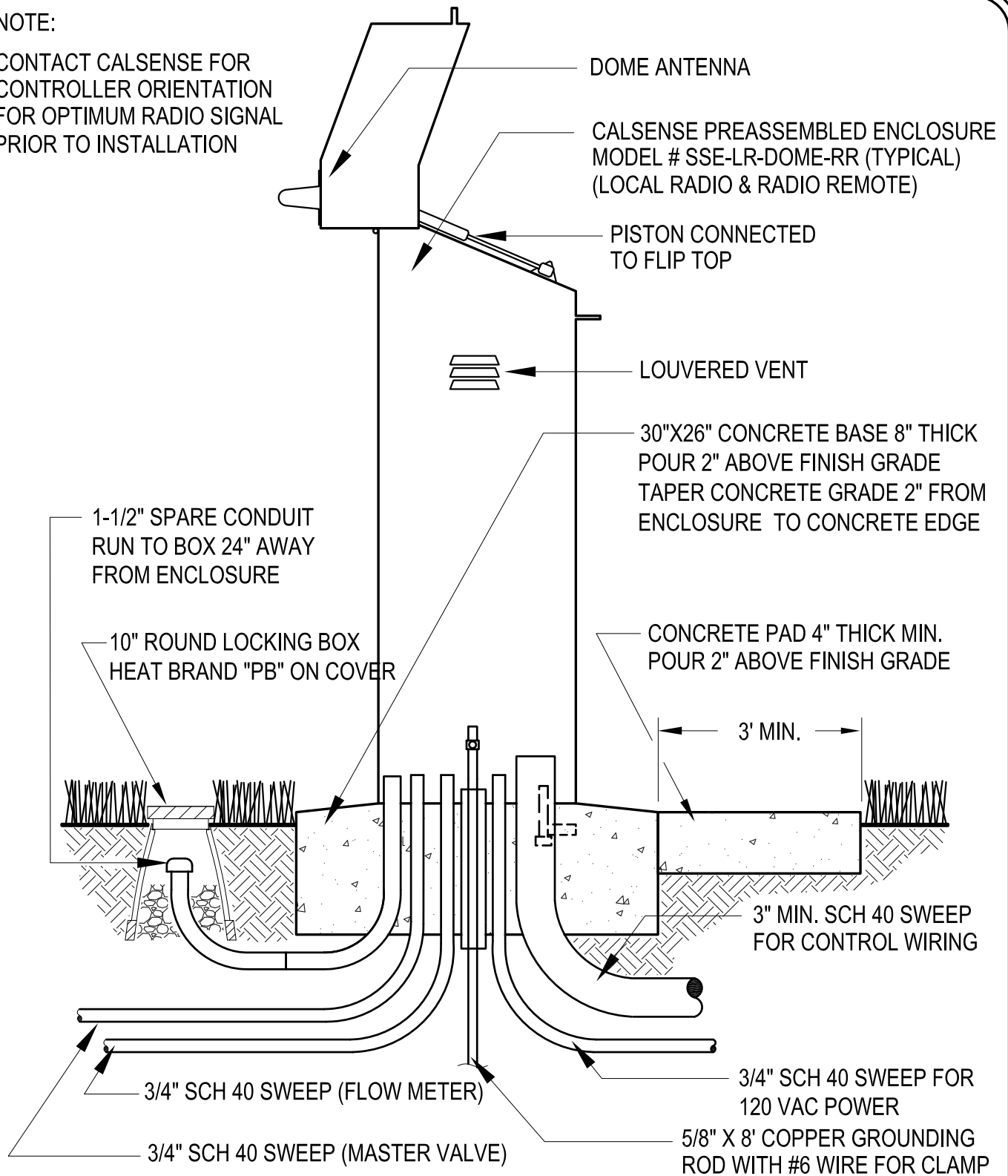


NOTE:

CONTACT CALSENSE FOR
CONTROLLER ORIENTATION
FOR OPTIMUM RADIO SIGNAL
PRIOR TO INSTALLATION



LD Consulting 2012 (Any deviation or reproduction of this design must be approved in writing by Valley-Wide Recreation & Park District)



VALLEY-WIDE RECREATION & PARK DISTRICT

IRRIGATION PEDESTAL ENCLOSURE

IR-20

REV. 2012