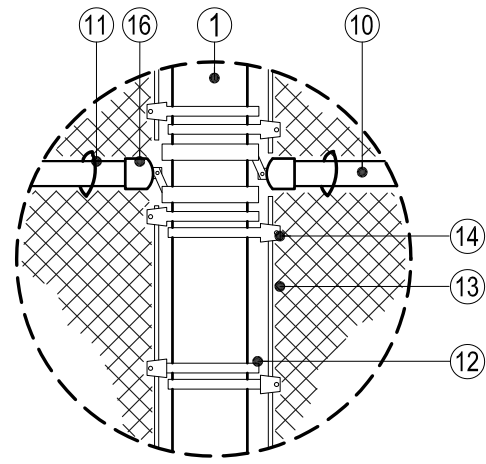
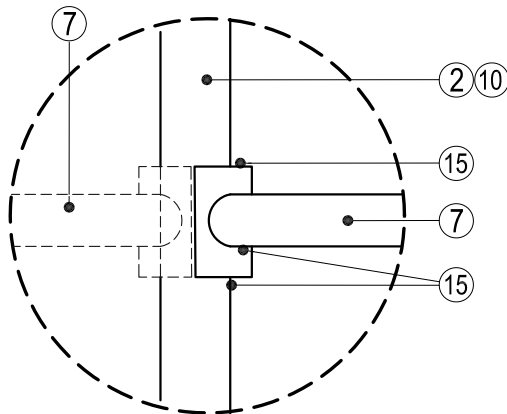


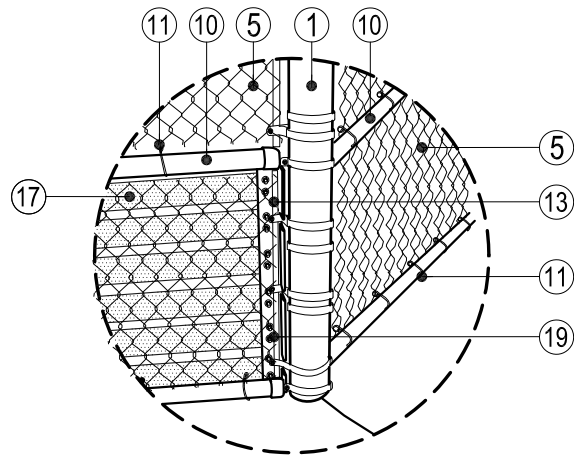
SEE (A) DETAIL LC-23



SEE (B) DETAIL LC-23



SEE (C) DETAIL LC-23



SEE (D) DETAIL LC-23

REFER TO DETAIL LC-23 FOR 1 -10 NOTES

- (11) 9 GA. GALV. HOG RING @ 24" SPACING
- (12) 6-5/8" GALV. TENSION BAN
- (13) 3/4" GALV. TENSION BAR
- (14) GALV. NUT & BOLT TO SECURE RING
- (15) WELD GALV. METAL POST/PLATES TOGETHER AND APPLY COLD GALV. PAINT
- (16) GALV. RAIL/POST END CAP
- (17) 2"X6" COMPOSITE WOOD (6X HIGH) PROVIDE 1" GAP BETWEEN EACH BOARD PROVIDE 2" X 1/4" THICK GALV. VERT. FLAT BAR TO CONNECT/SUPPORT BOARDS IN CENTER TO PREVENT SAG
- (18) 3"X36"X5' GALV. ANGLE WELDED TO 6" POST TO SECURE BUMPER BOARDS
- (19) 1/2" GAL. BOLT WASHER & NUT TO SECURE BOARD TO GALV. ANGLE (TWO PER CONNECTION)

NOTE: ALL JOINTS SHALL BE WELDED ON SITE AND PRIMED WITH COLD GALV. PAINT

LD Consulting 2012 (Any deviation or reproduction of this design must be approved in writing by Valley-Wide Recreation & Park District)



VALLEY-WIDE RECREATION & PARK DISTRICT

CHAIN LINK BACKSTOP CONNECTIONS

LC-24

REV. 2012