

CALSENSE CONTROLLER ASSEMBLY  
 MODEL # ET-2000e-XX-LR-RR-SSE (TYP.)  
 WHEN USING MULTIPLE CONTROLLERS  
 CONTACT CALSENSE TO CONFIRM MODEL #

FLIP TOP IN OPEN POSITION

CONTRACTOR SHALL ADJUST ALL IRRIGATION TO PREVENT OVER SPRAY ON CONTROLLER ENCLOSURE

GFCI OUTLET & SWITCH

STAINLESS STEEL ENCLOSURE  
 (WITH DOME ANTENNA)

CALSENSE TP-1 TRANSIENT PROTECTION BOARD

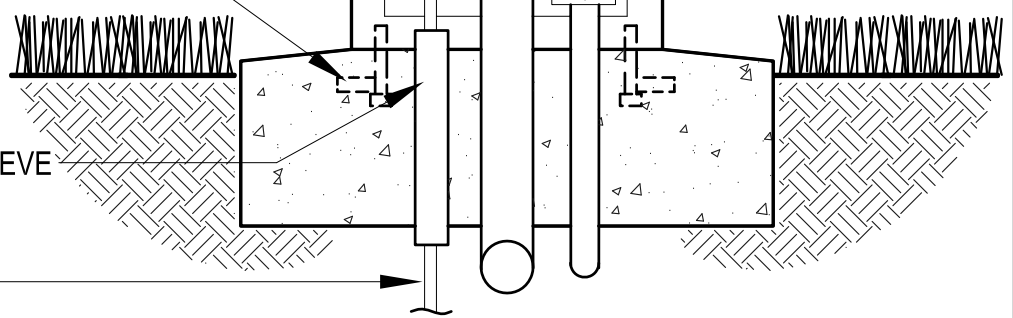
#6 AWG GROUNDING WIRE  
 CONNECTED TO GROUND LUG

120 VAC JUNCTION BOX

MOUNTING BOLTS

3/4" GROUNDING ROD SLEEVE

GROUNDING ROD



NOTES:

1. CONTACT CALSENSE FOR SPECIFIC CONTROLLER MODEL NUMBER FOR EACH INDIVIDUAL PROJECT
2. ALL CONTROLLER COMPONENTS MUST BE CERTIFIED BY CALSENSE
3. CONTRACTOR SHALL BE RESPONSIBLE FOR COORDINATING AND INSTALLING ALL REQUIRED CONTROLLER COMMUNICATIONS CONTACT CALSENSE FOR EACH PROJECT REQUIREMENTS
4. CONTRACTOR SHALL INSTALL AND PROGRAM FLUSH VALVE TO DRIP 2 PROG. PER SPECS.

LD Consulting 2012 (Any deviation or reproduction of this design must be approved in writing by Valley-Wide Recreation & Park District)



VALLEY-WIDE RECREATION & PARK DISTRICT

IRRIGATION PEDESTAL CONTROLLER

IR-21

REV. 2012